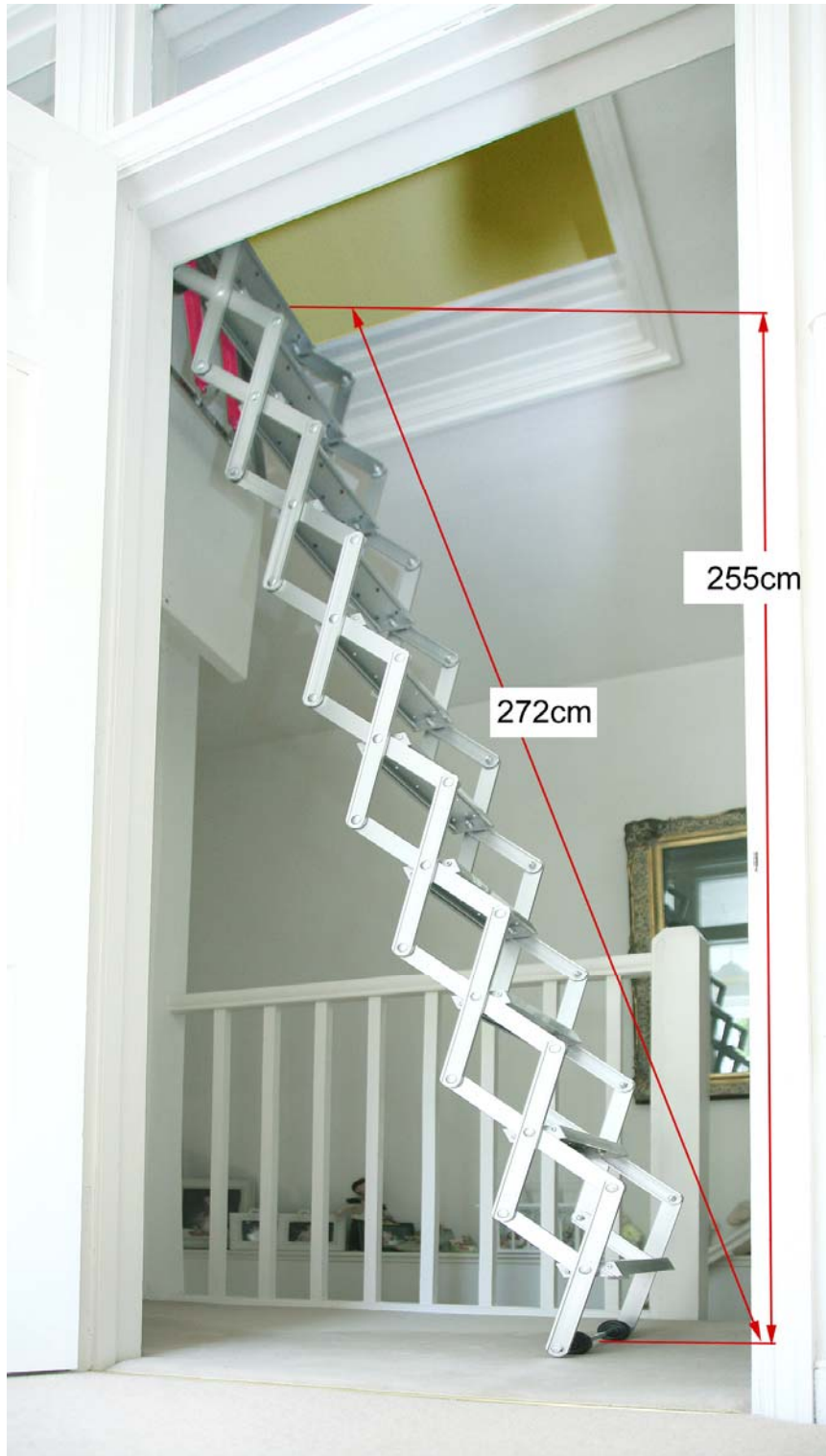


INSTRUCTIONS FOR FITTING THE ECKMAN ALUMINIUM 10 RUNG CONCERTINA LOFT LADDER LL003

Manufactured to European Safety Standard EN14975



ANY QUESTIONS OR PROBLEMS-CONTACT THE ECKMAN
HELPLINE ON 0845 555 4440 OR VISIT WWW.ECKMAN.CO.UK

This ladder is suitable for ceiling heights up to 9ft (274cm) and is designed and tested to take a maximum load of 150kg (23.5 stone).

The Minimum hatch size required in order to fit this ladder is : Width \geq 45cm , Length $>$ 55cm.

Fitting this ladder isn't difficult but will require some previous DIY skill so if you are a complete novice, either get some help from a friendly DIY'er or from a local tradesman.

STEP 1

If the existing access to your loft is via a loose-fitting or latched push-up type board (door), you'll need to change this into latched hinged door that swings down, operated by a pole. If your existing access board is not suitable (maybe too heavy, made of unsuitable material such as plastic), replace with more suitable wooden sheet material (eg, 8 – 10mm thick ply board). The board is best re-fitted flush with any architrave as this allows sufficient room for the ladder to be fitted.

NB: All hardware required is supplied with the ladder - see picture of Parts. Use the hinges supplied if your trap door is not already hinged.

STEP 2

With the loft door dropped down (open), you now need to attach the ladder to the loft hatch surround. For safety purposes it is essential that this fixing is as secure and as strong as possible. Using either screws or bolts, attach the 17mm thick back board already fitted to the ladder to the hatch surround. As hatch surrounds can vary in depth enormously, fixings for this particular purpose have not been supplied and you will need to purchase these from a hardware store.

Simply by attaching the back board and ladder using screws into the hatch surround will not provide a secure and safe enough fixing. You will need to locate the ceiling joists or strengthening cross beams that the hatch surround is already fitted to and screw through the surround into these. It is likely that on average you will need to use screws approximately 80mm in length but please check first before purchasing and don't forget to allow for the thickness of the back board. Always drill smaller pilot holes prior to fixing screws ! Pre-drill pilot holes in the ladder's back board. We recommend a minimum of 4 fixings.

The job can be made far easier with two people and the back board clamped to the hatch surround using G clamps whilst fixing.

STEP 3

Fitting the Hatch Door Catch (Parts B & C)

Using parts supplied, fit (C) to the hatch door so that the hook can be accessed from the outside. This needs to fit snugly into the catch lock (B) when the hatch door is closed. The catch lock needs to be fitted to the inside of ceiling joist or cross member. Ensure both line up correctly prior to final fixing.

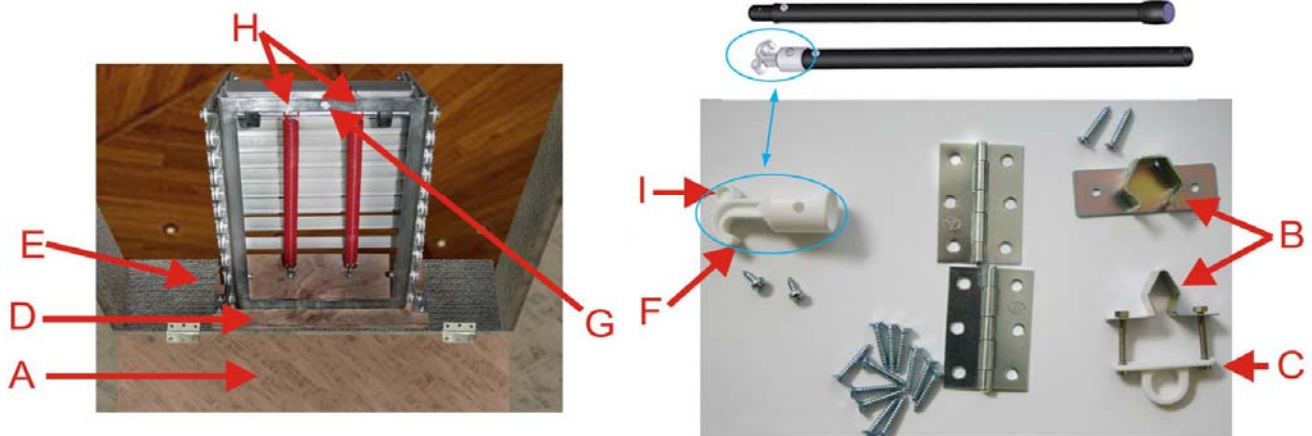
OPERATING

TO LOWER

1. Locate the pole hook into the eye (C) and lower the door (A)
2. Put the pole hook (F) into the hole (G) on the carriage and rotate the whole ladder by 90 degree downwards .
3. Put the pole hook (F) into the hole (J) on the back of the lowest step, then use Hooks (I) lift the ladder up, so that the metal rod with 2 wheels is out of the retaining hooks H on the carriage, and lowered to the ground by using hook (F) . After the ladder is at a proper height , hold the ladder by hand, take off the pole. Then pull the ladder downwards by hand, until the ladder is fully opened and the 2 wheels touch the ground. The ladder can be use now.

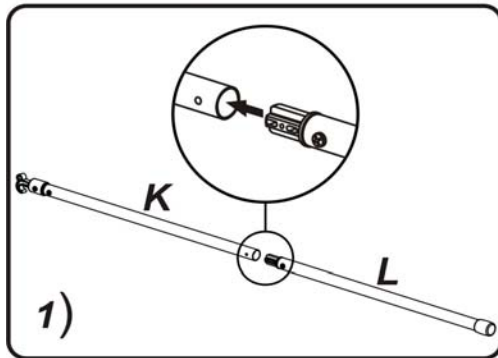
TO RAISE

1. Lift the ladder back to a proper height by hand, then put Hook (F) into hole(J) on the back of the lowest step. Continue to lift ladder up by using hook (I) until the ladder is fully folded. Make sure the metal rod with 2 wheels is fixed with Hook (H), then take off the pole.
2. Put hook (F) of the pole into the hole (G), lift the ladder up by using hook (I), rotating the whole ladder by 90 degree , then take off the pole.
3. Put hook (F) of the pole into the hole of plastic part (C), lift the wooden board (A) up by using hook (I), until lock (B) on the board (A) is locked into its seat. Now ladder is folded.

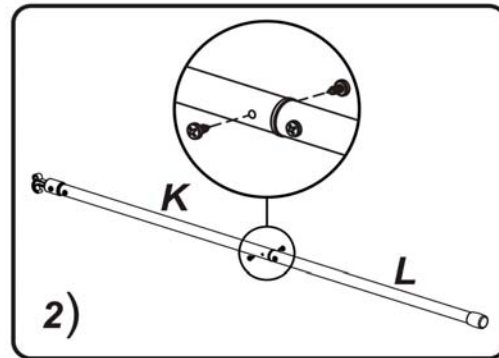


Assembling of Pulling Pole

Insert the end of Part L into tube of Part K fully,

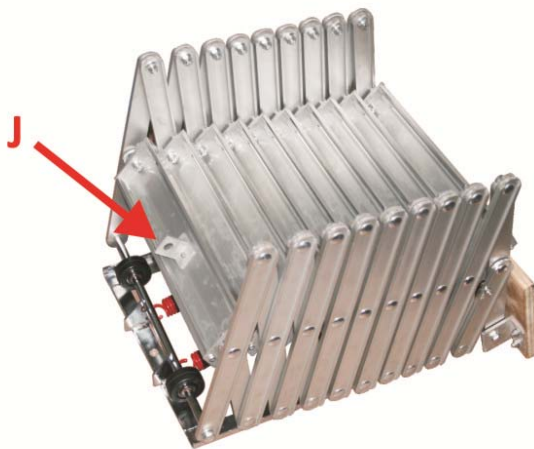


Put the two screws into the holes, then tighten.



3) Pulling Pole

Back side of loft ladder



This ladder is guaranteed for a period of 10 years from date of purchase against faulty workmanship. If the ladder is modified in any way or not fitted in accordance with these instructions, your guarantee will be void. Your statutory rights remain unaffected.

Any problems or questions – please call the Eckman Helpline on 0845 555 4440 or go to www.eckman.co.uk and check out the video.

Imported by T2 Direct Ltd – London.